



MG BROTHERS™
Since 1928



ABOUT US

With a 95 Year old heritage, the MGB Group today has significant presence in diverse industries ranging from automobile to manufacturing, real estate and retail. And, with a combined annual turnover upwards of Rs. 650 crores, the Group's footprint is spread across the states of Andhra Pradesh, Telangana and Karnataka.

MANAGEMENT PHILOSOPHY

On a mission to provide customers with best-in-class products and services, MGB Group's business operations stand on four guiding pillars. They are adhering to ethical business practices, following a sound financial discipline, providing consistent value to customers, and moving in step with changing times.

ACHIEVEMENTS

M G BROTHERS



57

Year of establishment: 1955
Annual Turnover: ₹616 cr
Number of outlets: 15
Brands: Bajaj Auto, Tata motors
- commercial vehicles, TAFE
Tractors, TATA Hitachi
Headquarter: Andhra Pradesh

Started by Mechani Ramanna in 1955 with Tata Motors commercial vehicle business, the MG Brothers Group was among the first batch of dealers from Tata Motors.

In 1985, his son Gangadhar joined this family business and expanded it from Rs 3 crore to Rs 616 crore in 2018-19. To achieve this growth, he started putting the profits earned from the dealership back into the expansion of the business.

He believes in doing investment judiciously and advises his peers not to put too much money in setting up huge infrastructure, mostly in workshops.

Presently, MG group has 15 dealerships across the belt of Chittoor, Nellore, Krishna, Kadapa and Anantapur districts. The company prefers to grow at an average rate of 10 per cent and believes in keeping their avenues open for new business. The profitability of the automobile business helped the group to enter into construction and real-estate segments in 2002.

THE ECONOMIC TIMES

TOP



POWER DEALER LIST 2018

100

61

MG Brothers

Dealer Principal M R Gangadhar

Established in 1955 by Mechani Ramanna, MG Brothers is the dealer for Tata Motors, TAFE, and Bajaj Auto with 23 outlets across the belt of Chittoor, Nellore, Krishna, Kadapa and Anantapur districts in Andhra Pradesh.

In 1985, the founder's son Gangadhar joined the family business and in the ensuing three decades, diversified it from Rs 3 crore to Rs 616.21 crore in FY20.

The dealership ascribes this growth to its careful conduct of business and constantly monitoring all industry happenings to take proper measures to deal with any situation.

MG Brothers prefers to grow at an average rate of 10 percent and believes in keeping their avenues open for new business. The profitability of the automobile business helped the group to enter the construction and real estate sector in 2002.



Year of Establishment
1955

Annual Revenue
FY19 Rs 648.21 crore
FY18 Rs 634.46 crore
FY17 Rs 592.54 crore

No of Employees
NA

Average Revenue per employee
NA

Number of outlets
23 (16 rented, 7 owned)

Brands
Tata Motors, Bajaj Auto,
TAFE

Headquarters
Nellore, Andhra Pradesh

THE ECONOMIC TIMES

MG BROTHERS
Since 1955



RANKED NO. 61 IN ALL INDIA

M.G. BROTHERS GROUP IS LISTED IN THE TOP 100 POWER DEALERS (2018) IN INDIA BY THE ECONOMIC TIMES WHICH WAS UNVEILED BY HONORABLE COMMERCE MINISTER SURESH PRABHU, M.G.BROTHERS IS RANKED NUMBER 57 OUT OF 15,000 AUTOMOBILE DEALERSHIPS.

M.G. BROTHERS GROUP IS LISTED IN THE TOP 100 POWER DEALERS (2019) IN INDIA BY THE ECONOMIC TIMES, M.G.BROTHERS IS RANKED NUMBER 61 OUT OF 15,000 AUTOMOBILE DEALERSHIPS.



ACHIEVEMENTS OF MGB FELICITY MALL



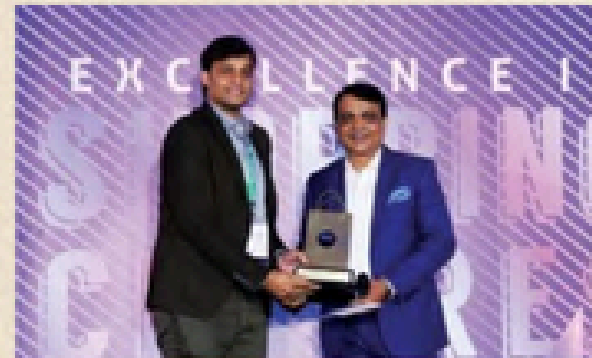
"Best upcoming Mall South India" by TAVF 2017



Images excellence award for "Mall occupancy optimization" by Images Shopping Centre Awards - 2018



"Most number of Events non metro" by TAVF 2018



Images most admired shopping center of the year - "Best Marketing & Promotions" by Images Shopping Centre Awards - 2019



"BEST FESTIVE DECOR" by TAVF 2019



" Excellence in Shopping Mall : non metro South India" award by Economic Times-2024



MGB INFINITY
Kakupalli-2



MGB 5 STAR Assurance

RELIABILITY

We have been in the business for about 9 decades! And we have delivered 70+ projects with more than 1100 acres of plotting and delivered 2 million square feet in construction. These unprecedented figures make us the most reliable, trusted and preferred name in the business of real estate development.

QUALITY

We are obsessed with quality and hence we only use the best and most reliable materials for our projects. Each material that we use is tested under best labs to assure the best quality and it is an on-going affair at MG Brothers. We have extensive and diverse quality assurance and checking mechanisms, always overseeing quality and making certain of it.

LONG LASTING BUILDINGS

We understand that properties are for a lifetime and we build them to last so. With careful procurement practices and systems in place, we only choose the best and most trusted materials that stand the test and challenges of time.

VALUE FOR MONEY

We are very keen that every penny invested by our client must get its worth from us. As such, we never rest crafting the most value adding and befitting construction projects to all our clients at times that we promise. We know that delivering projects as expected and dreamed of by clients is the best way to deliver value. And we never nudge from that.

GLOBAL EDGE

All our projects are constantly designed and crafted by the best and most experienced architects with matchless insights and global exposures. This ensures that we always stay ahead of the trends and times of the country bringing in the much needed elements of value, comfort and original aesthetic sense to all our projects.



AFFORDABLE LUXURY

Any way you want to assess or look at our project, it is luxury and convenience redefined for our patrons from across the world. We have worked hard for months to ensure that our vision of affordable luxury takes the form that we wished for it. At the end of the day, we are happier to be the energy behind conceiving, designing and building a new address for uber luxury and comfort unlike anything before it.

Since we constantly work with a horde of suppliers to get the best rate for each of the supplies we need, we can transfer the benefits rightly to the clients to tender our notion of affordable luxury in the best ways we can.

You can witness this with each element you find in our project and the value-adding price we offer them.



ABOUT THE PROJECT

Welcome to our ultra-luxury project, where we redefine the very concept of luxury living with our unparalleled architectural vision and heavenly conveniences. Our goal is to impress our clients with never-before amenities and comforts and to create a new iteration of luxury living in today's world.

At our company, we believe that our clients are the heart of our business. That's why we make it our mission to prioritize their needs and provide them with the best possible service. We work tirelessly to ensure that our clients receive affordable prices without compromising on quality.

CHANGING THE LANDSCAPE OF AFFORDABLE LUXURY

Our latest project is a testament to our dedication towards our clients. We are proud to say that our construction gem is one of the most impressive in the industry, and it's changing the game in terms of convenience and comfort for our patrons. We have designed and built this project keeping our clients in mind, and we are confident that they will love it.



Individual Club House | 5000 Sft. | Pool Deck

Adult Swimming Pool | Kids Swimming Pool | Reception, Waiting Lounge

Banquet Hall | Indoor Games | Gymnasium





AMENITIES

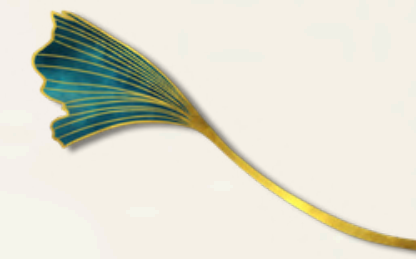
- Swimming pool
- Children's park
- Club house with Gym, Banquet hall
- Indoor games



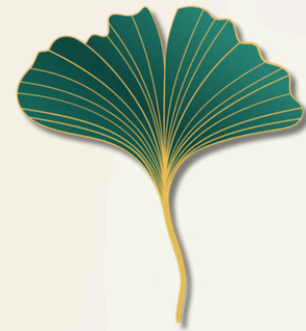
The Clubhouse

- The clubhouse in our project is truly a gem, boasting a plethora of world-class amenities that are sure to cater to everyone's interests and preferences. Whether you're in the mood for some adrenaline-pumping action or just want to kick back and relax, there's something for everyone here.
- If you're looking for a way to unwind and de-stress, the indoor games room is the perfect place to be.
- If you're in the mood for something more lively, the clubhouse is the go-to place for parties and functions. With a well-equipped party hall, you can set the table for a function or spice up your life with a party that your guests will never forget.
- And if you're feeling really adventurous, the poolside party is an experience that's not to be missed. With a perfectly arranged barbecue setting, you can add more spice to your party and make it truly memorable.
- But that's not all. The clubhouse also has an outdoor shuttle court and volleyball court where you can spend your evenings and make them count. These courts are perfect for those who want to stay active and energetic while enjoying the beautiful outdoors.
- Of course, safety is always a top priority, which is why the clubhouse is equipped with a protective environment. The compound wall is fitted with electrical fences all around, ensuring that you can enjoy all the amenities in a safe and secure environment.

- Landscaped gardens
- STP
- Hydropneumatic system for water supply
- Villa's common area lighting
- Volleyball & Shuttle court
- Backup Generator



THE AMENITIES



We have endowed our project with amenities that will invoke the sense of a posh modern setting that will trick your mind into a new-found reality. Your senses will find it impeccable, and your mind will always linger through the comforts, bringing a pure sense of awe and mastery.

Our amenities are carefully designed, placed, and crafted to ensure effective breathing space, keeping in mind the traffic of the people, adjacent rooms, and ergonomics. Each portion of the villa is analyzed to make it a master-class construction, without ignoring the importance of aspects like water conservation where we preserve, control and develop water resources by measures and techniques like rainwater harvesting and sewage treatment plant.

Villas Layout



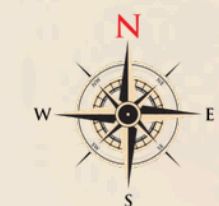


PREMIUM VILLA - EAST FACING

- Super Built up Area :2418.65 Sft.
- Built up Area :2418.65 Sft.
- Carpet Area :1773.14 Sft.



**PREMIUM VILLA
EAST FACING - GROUND FLOOR**





**PREMIUM VILLA
EAST FACING - FIRST FLOOR**

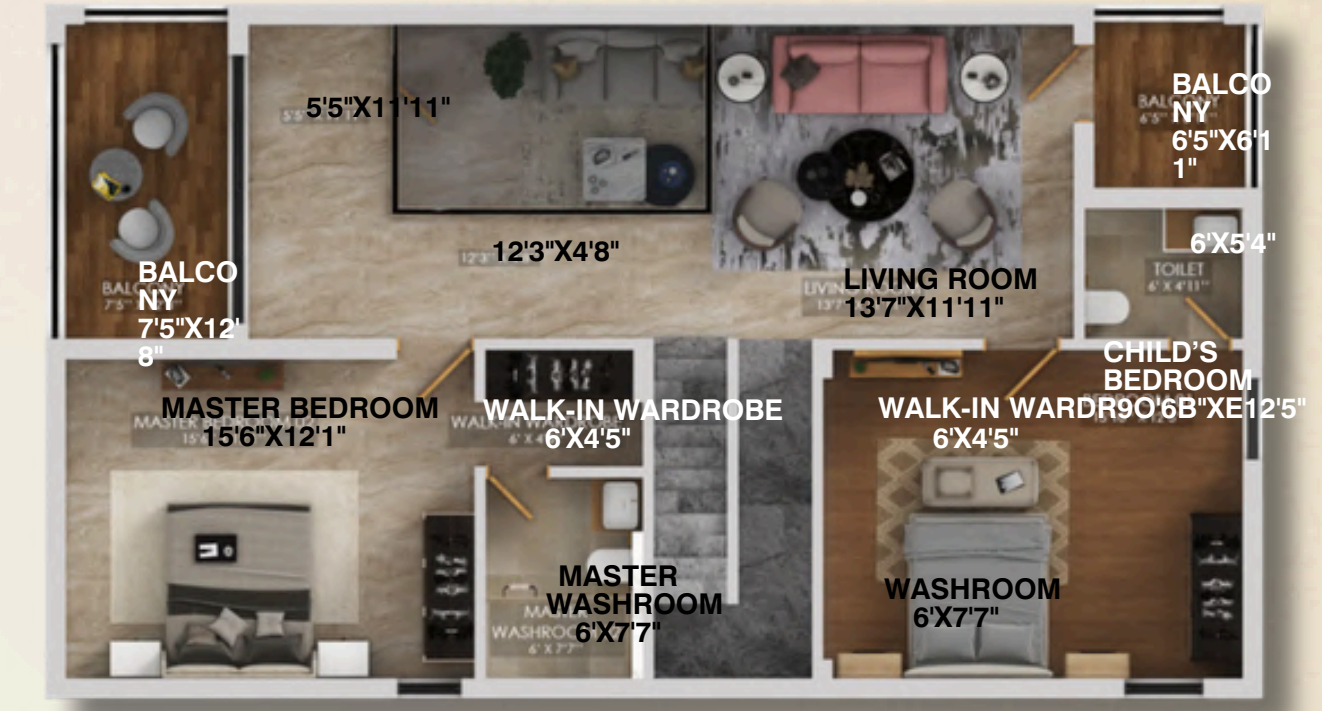


PREMIUM VILLA - WEST FACING

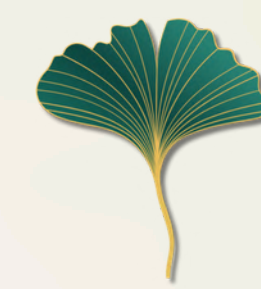
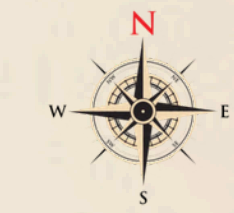
- Super Built up Area : 2497.24 Sft.
- Built up Area : 2497.24 Sft.
- Carpet Area : 1569.77 Sft.

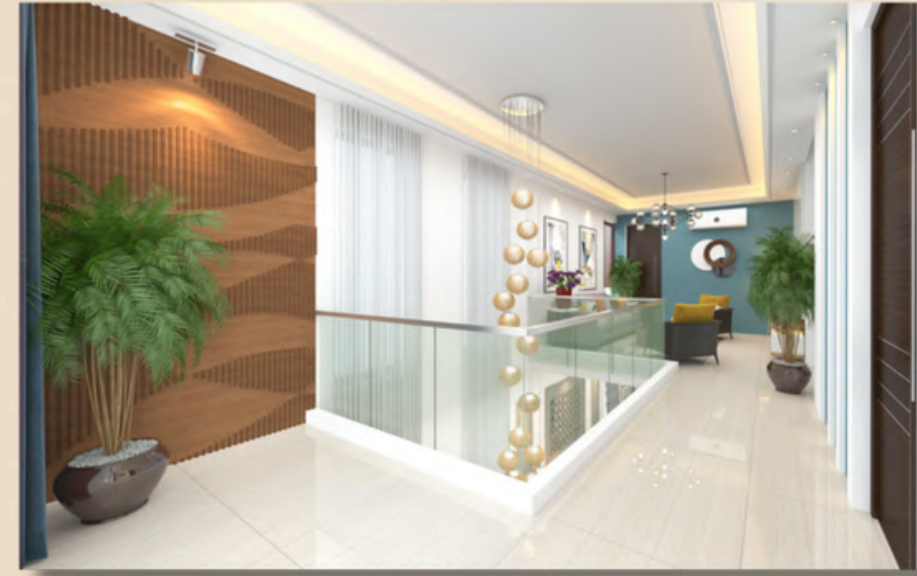


PREMIUM VILLA
WEST FACING - GROUND FLOOR



PREMIUM VILLA
WEST FACING - FIRST FLOOR





THE LIFESTYLE

Our project is more than just another luxury offering. It is a carefully crafted lifestyle that we have invented, designed, and will soon deliver to our clients. The lifestyle we are offering is a unique blend of convenience and luxury that will transform the way our clients live. We believe that our offering will not only make life easier but also enrich it with a sense of opulence that they have never experienced before.

We have been working tirelessly for months to bring our vision of affordable luxury to life. Every aspect of our project has been meticulously planned and executed to ensure that our clients get the best of everything. From the design of the living spaces to the amenities and services we offer, everything has been thoughtfully curated to meet the highest standards of luxury.

We aim to redefine luxury and convenience for our patrons from across the world. We want to create a lifestyle that is not just about material things but also about experiences. We believe that our project will provide our clients with the sense of fulfilment that they have been seeking. We can't wait to see the look of awe and wonder on our client's faces when they experience the sheer magnificence and opulence of what we have created.

THE LOCATION

The location of our project has been strategically chosen to provide you with easy access to a multitude of important civil and general amenities that will make your life comfortable and convenient. From hospitals and schools to markets, railway stations, bus stands, and other offices, everything is within close proximity. You will never have to worry about being too far away from any essential service or facility when you live here.

The impeccable connectivity that the location offers is one of the key highlights of this project. You can easily travel to different parts of the city without any trouble whatsoever. The location is well-connected to major roads, highways and public transport options are easily available.

Apart from the excellent connectivity, the location is also surrounded by lush greenery, providing a refreshing and rejuvenating atmosphere. You can take a stroll or jog around the project and enjoy the natural beauty that surrounds you.

All in all, the location of our project is the perfect blend of convenience, connectivity, and natural beauty. You will never find a better spot to reside in, and we are confident that you will love everything that this location has to offer.



Distance from MGB INFINITY

- Rainbow CBSE School • - • 4.1 Km
- Apollo Hospital • - • 8.5 Km
- APSRTC • - • 10.5 Km
- Railway Station • - • 11.1 Km
- Narayana Hospital! • - • 6.0 Km
- VRC Centre • - • 10.2 Km

SPECIFICATIONS



R.C.C. FRAMED STRUCTURE SUPER	<ul style="list-style-type: none"> Earthquake resistant foundation with R.C.C. M20 or 25 grade concrete.
STRUCTURE PLASTERING	<ul style="list-style-type: none"> Red Brick work with good quality brick.
<i>Internal</i>	<ul style="list-style-type: none"> Double coat cement plaster with smooth finish with Birla white cement.
<i>External</i>	<ul style="list-style-type: none"> Double coat and faced cement plastering of 20 MM thick.
DOORS	<ul style="list-style-type: none"> Door height 2400 mm hardwood/LVL frame flush shutter with wood veneer facing with PU finish & Reputed Hardware.
WINDOWS	<ul style="list-style-type: none"> Good Quality UPVC Windows.
PAINTING	<ul style="list-style-type: none"> Sandex Max exterior emulsion paint of Asian make Smooth finish with good quality putty over a coat of primer finished with two coats of acrylic royal emulsion paint
<i>External</i>	
<i>Internal</i>	
Elevation	<ul style="list-style-type: none"> Texture paint with cladding.
FLOORING	<ul style="list-style-type: none"> Vitrified tiles 4' X 2' with 4" Skirting, RAK, johnson or equivalent Vitrified tiles 4' X 2' with 4" skirting of high quality Glazed vitrified tiles 4'X2' . Granite stone Rustic series ceramic tiles Inter locking paver tiles or Granite unpolished. Glazed ceramic tiles dado or equivalent tiles up to 10 feet height, Flooring - Anti skid tiles.
Hall & Dining	
Kitchen	
Bed room	
Stair case	
Covered Balconies	
Parking area	
Bathrooms	
KITCHEN	<ul style="list-style-type: none"> Provision for aqua guard with electrical supply. provision for Water TAP. Provision for chimney.
Utilities/Wash	<ul style="list-style-type: none"> Glazed ceramic tiles for Flooring.



SANITARY	<ul style="list-style-type: none"> Master Bathrooms consisting of granite counter top, wash basin with hot and cold mixer valve. EWC with flush tank of hind ware or equivalent. Provision for geysers in all bathrooms. 10' height glazed tile dado and ceramic tile (Johnson/Kajaria/Bell)flooring, common toilet with E.W.C. and attached toilets with E.W.C. with one wash basin and H/C mixtures in each toilet with all other necessary.
WALLS	<ul style="list-style-type: none"> External 9 inches thick walls of RED Brick masonry/ internal 4.5 inches.
ELECTRICAL	<ul style="list-style-type: none"> Concealed copper wiring in PVC conduits with firm earthing including terrace. 15 Amps power point in master bedroom, kitchen and toilets. Power outlets for air conditioners in all bedrooms. Power plug for cooking range chimney, refrigerator, micro ovens, mixer grinder in kitchen. Plug points for T.V. and Audio systems, etc., wherever necessary. Three Phase supply for each unit and individual meter boards flushed with wall. Modular miniature circuit breakers (MCB) and ELCB with ISI Mark (Legrand Make) and underground laying of external power lines. All electrical fittings of Siemens make. All the switches, plug points and light fittings of roma brand
TELECOM	<ul style="list-style-type: none"> Provision for Telephone points in all bedrooms, drawing and dining areas. Provision for internet connection in study, bedrooms and drawing rooms and wherever necessary
CABLE TV	<ul style="list-style-type: none"> Provision for Cable connection in all bedrooms and living rooms
INTERNET	<ul style="list-style-type: none"> Internet provision in hall
POWER BACKUP	<ul style="list-style-type: none"> Standby power supply by generators to common area and Club House. Provision for inverter.
INTERNAL STAIRCASE	<ul style="list-style-type: none"> SS railing with Glass and flooring with natural stone.
ENTRY GATE	<ul style="list-style-type: none"> S.S framed doors and side wicket gate for entry of Vilas Project.
WATER SUPPLY	<ul style="list-style-type: none"> At least 2 outside water taps for gardening.
SECURITY	<ul style="list-style-type: none"> Night vision cctv with control room.
COMPOUND WALL	<ul style="list-style-type: none"> 9 inch brick wall for entire Community & 4.5" inch side brick wall for Individual villa.





HEAD OFFICE

**Plot No. 49, 1st Floor, SBI Colony, Near Current Office Center
A.K.Nagar (Post), GNT Road, Nellore - 524 004.**

web : www.mgbrothers.com

AP RERA : PO92503352119